

APRIL/MAY 2010

THE WAG

SPRING
FASHION
ISSUE

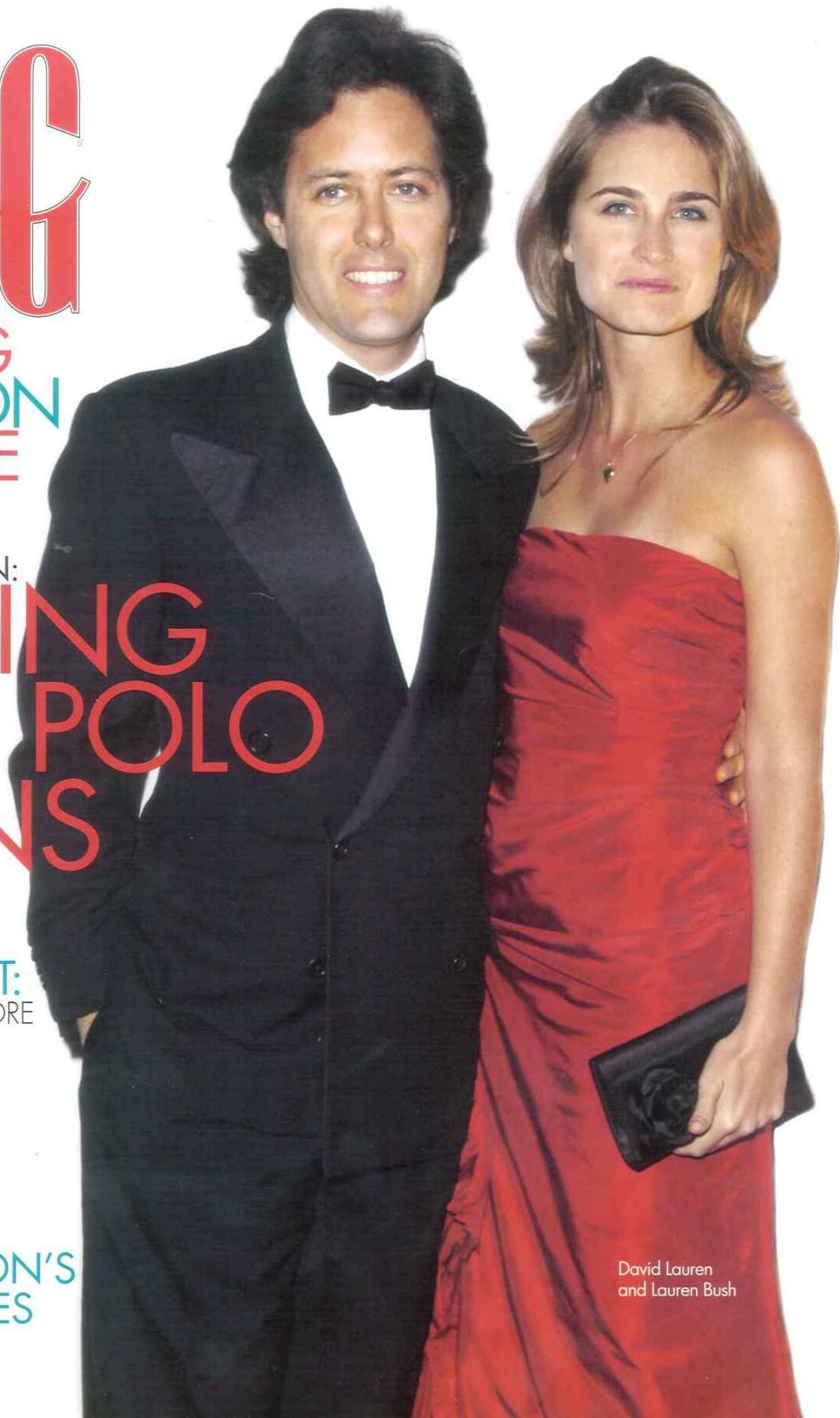
DAVID LAUREN:

TAKING THE POLO REINS

FASHION
FORECAST:
WHAT'S IN STORE

LIGHTEN UP!
SPRING
MAKEUP

REGISTRY:
THE SEASON'S
BEST PARTIES
& EVENTS



David Lauren
and Lauren Bush



Kimara Ahnert

Put Your Best Face Forward!

Beauty outpost KIMARA AHNERT MAKEUP STUDIO opened this month at the former Shabby Chic at 88 Greenwich Ave. in Greenwich. Manhattan-based makeup artist Kimara Ahnert has worked with the likes of Catherine Zeta-Jones, Gwyneth Paltrow, and Brooke Shields. Now, she's bringing the star treatment to Fairfield County with her 3,000-square-foot, Parisian-inspired space, including au-busson rugs and pillows tossed on Louis XVI chairs and settees, luxurious dressing rooms, state-of-the-art facial/massage facilities, and intimate cosmetic counters.

Taking a cue from our spring trend report, we asked Ahnert for her tips on the best way to complement spring's top looks.

Barely There Frocks: The recent red carpets and runways were awash in nude, barely there tones. To avoid looking washed out from head-to-toe, the makeup artist says to stick with neutrals that have a rose or peach base to them to compliment your natural coloring, not detract from it. Using a cream blush instead of a powder and a shimmery eye shadow will also add to the dewy naturalness of the look.

Painted Pastel Lids: Models showed off gem-toned shadows on the runways of Michael Kors, Zac Posen, and Nicole Miller. But Ahnert warns, if not done correctly, this look can make you look like you just stepped out of the '80s. "When wearing a bright pastel eye shadow, keep the trend up to date by NOT matching the color of the shadow to your outfit!"

Bold Brows and Lips: Gucci and Christian Dior's runway looks were accented by bright red lips and sculpted brows. Ahnert says to translate the look into everyday; you should only wear "one bold trend at a time."

Mineral Lip Tint by Kimara Ahnert



Makeup by Kimara Ahnert



beautybuzz

Get a fresh new look to greet the season. New advances in wrinkle-smoothing technology, Thai foot massage, and a glamorous, girly new salon will put spring in your step.



G-Spa at MGM Grand

SPRING BEAUTY GETAWAY

After a long (long, long) winter, it's time to stop and smell the spring flowers (and get relaxed and rejuvenated). The G-SPA at the MGM GRAND AT FOXWOODS RESORT AND CASINO combines Native American techniques with modern day spa treatments. It's worth the drive to soothe weary feet with their Thai foot massage, which is designed to trigger reflexes and stimulate the flow of energy throughout the body, leaving you "in balance" and with a feeling of well-being. For more information or reservations, call (866) 646-0050.

ANTI-AGING INJECTABLES NEWS

We've told you about Dysport, the new alternative to Botox, which received FDA approval last April. Now, the company that makes the injectable says it's widely available in the U.S. for the treatment of frown lines.

Allergan has announced the FDA approval of Juvederm XC, Restylane-L, and Perlane L—wildly popular wrinkle-fillers that have been reformulated to include the

local anesthetic lidocaine. "Patients will love these products even more because now the process is virtually painless," says Dr. David Bank of THE CENTER FOR DERMATOLOGY, Mount Kisco. "Patients do feel the first pin prick on either side but little to nothing afterwards."

PARK AVENUE MEDICAL SPA in Armonk is offering what it calls a "breakthrough" new treatment called Selphyl. Dr. Anca Tchelebi, the spa's medical director, says the treatment "harnesses the power of platelets naturally derived from your own blood, by triggering the production of new cells and collagen." It works like this: When Selphyl is injected, growth factors are released into the layers of your skin which will stimulate new collagen formation to "naturally" fight wrinkles.

Dr. Kenneth Magid, a cosmetic dentist whose practice, ADVANCED DENTISTRY OF WESTCHESTER, is located in Harrison, has been treating his patients with Radiesse filler for nasolabial folds (those "parentheses" lines running from the corner of the nose to the lips), "marionette" lines (located outside the smile), and lip augmentation.